



Original

# Installation And Service Manual



**Model Number: MC-600**

**Motorcycle Lift**

# CONTENTS

I. Product Features and Specifications .....	3
II. Installation requirement.....	4
III. Steps of Installation.....	6
IV. Exploded View.....	12
V. Test Run.....	18
VI. Operation Instruction.....	20
VII. Maintenance.....	21
VIII. Trouble shooting.....	22
IX. Lift Disposal.....	22

## I. PRODUCT FEATURES AND SPECIFICATIONS

### Motorcycle lift MC-600:

- Hydraulic cylinders, designed and made by USA standard, utilizing oil seal in cylinder.
- Self-lubricating UHMW Polyethylene sliders and bronze bush.
- Non-skid diamond platforms.
- Automatic safety release system.
- Optional : Width extension kit and length extension kit



Fig.1

### MODEL MC-600 SPECIFICATION

Model	Capacity	Lifting Height	Lifting Time	Overall Length	Overall Width	Minimum Height	Motor
MC-600	600KG	1090mm	23s	2700mm	750mm	155mm	1.5HP

## II. INSTALLATION REQUIREMENT

### A. TOOLS REQUIRED

✓Rotary Hammer Drill (Φ19)



✓Screw



✓English Spanner (12")



✓Wrench Set: ( 13# 、 15# 、 17# 、 19# )



✓Ratchet Spanner with Socket: ( 28# )



✓Grease gun



✓Hook Spanner(40~42mm)



✓Pliers



Fig.2

## **B. Equipment storage and installation requirements.**

The equipment should be stored or installed in a shady, normal temperature, ventilated and dry place.

## **C. The equipment should be unload and transfer by forklift.**



Fig.3

## **D. SPECIFICATIONS OF CONCRETE**

**Specifications of concrete must be adhere to the specifications as following. Failure to do so may result in lift and/or vehicle falling.**

1. Concrete must be thickness 100mm minimum and without reinforcing steel bars, and must be dried completely before lift installation.
2. Concrete must be of test strength 210kg/cm<sup>2</sup> minimum.

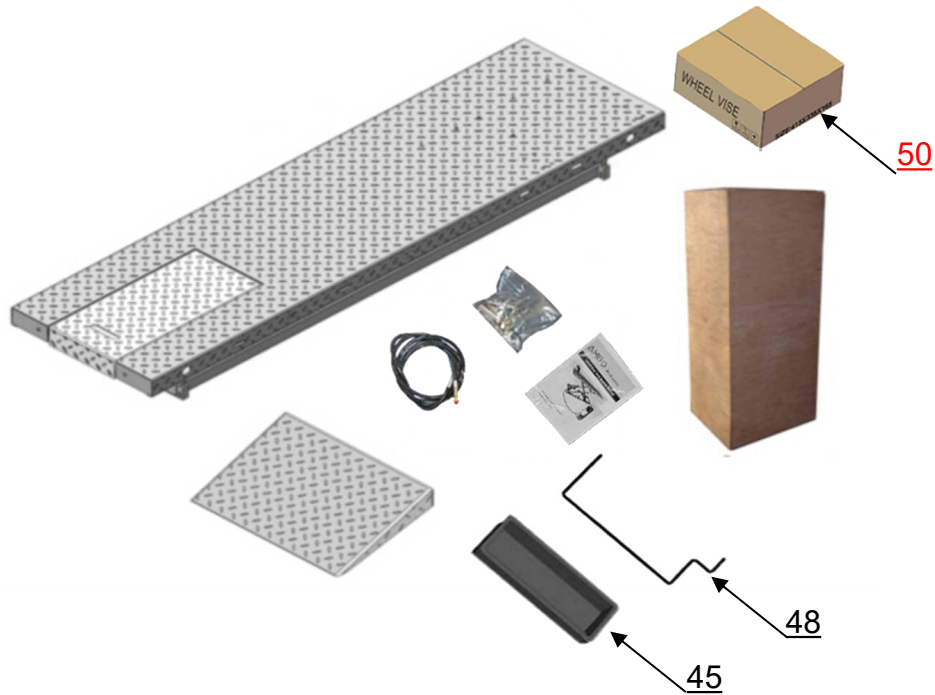
## **E. POWER SUPPLY**

The power capacity must be more than1.5HP, the power cable size must be 2.5mm<sup>2</sup> and in good condition of contacting with floor.

### III.STEPS OF INSTALLATION

#### A. Check the parts before assembly to make sure all the parts are completed.

1. Packaged cargo (lift, drive-in ramp, wheel vise, control box, oil hose, manual, part bad, tool tray support, tool tray) Move the parts aside, open the outer packing and check the parts according to the shipment parts list. **see Fig.4**



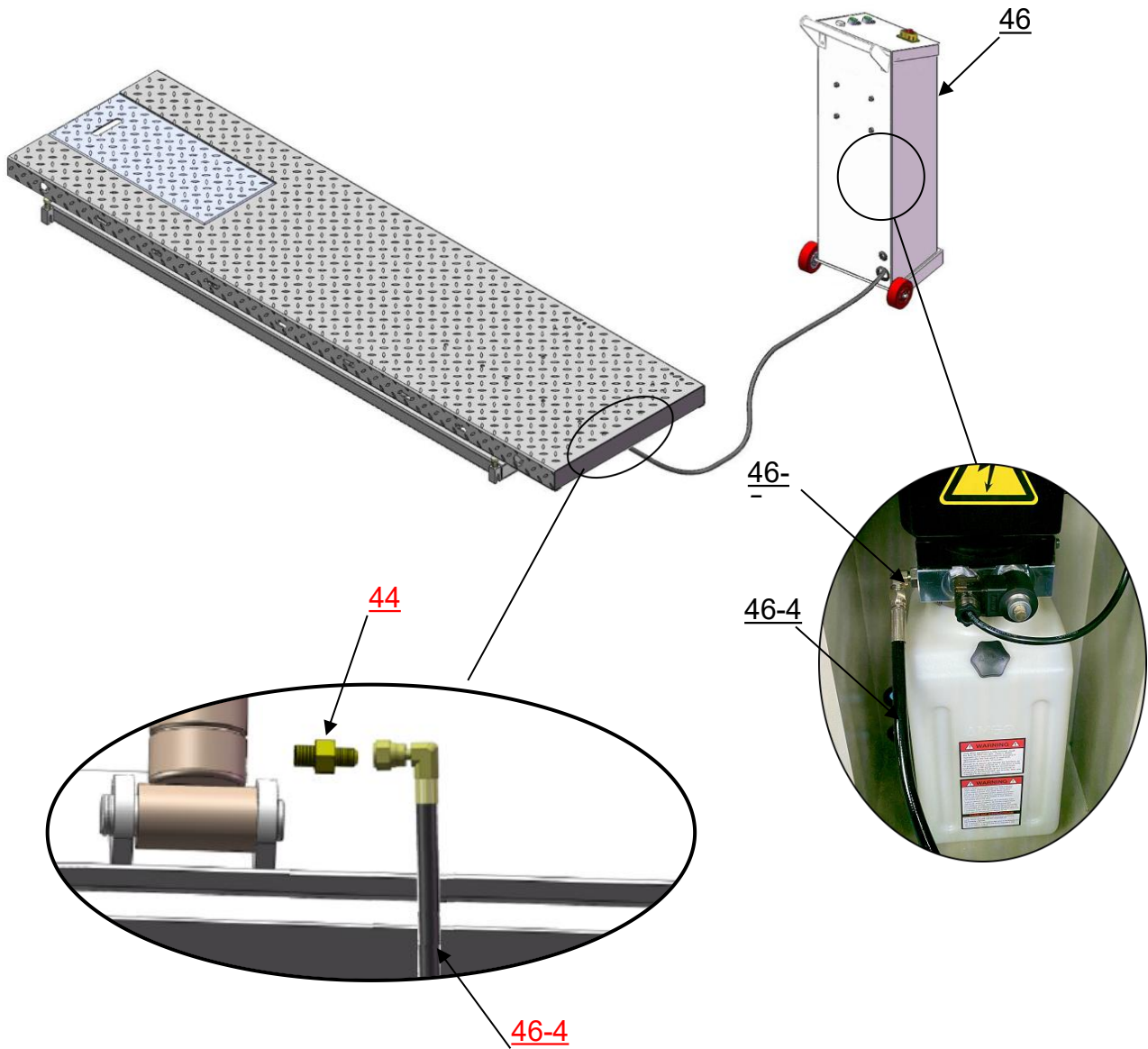
**Fig.4**

2. Open the parts bag, check the parts according to the parts list (**See Fig. 5**).



**Fig.5**

**B. Put the lift and control cabinet in good order and connect the oil hose (see Fig.7)**



**Fig.6**

### C. Install Electrical System

1. Connect the wire according to below diagram.

#### 1.1 Three phase circuit wiring (See Fig.7)

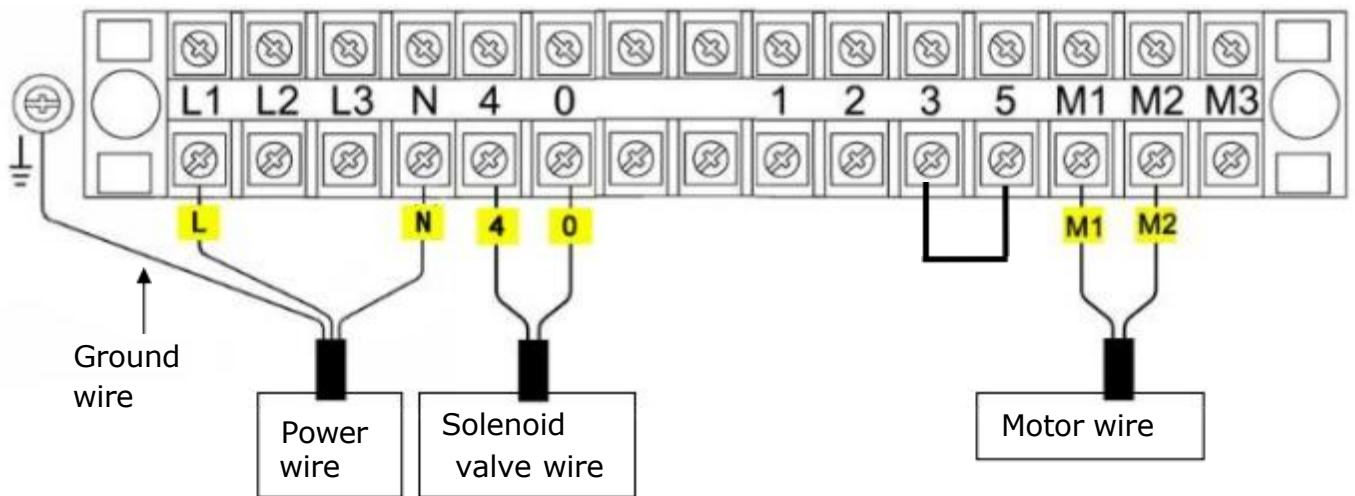
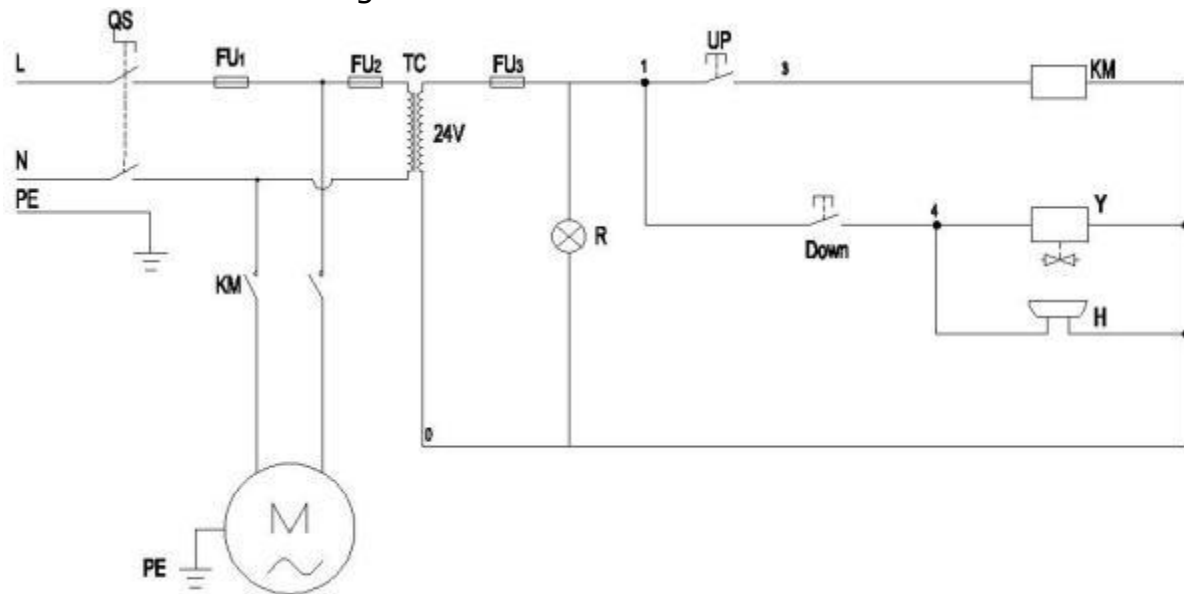


Fig.7

#### 1.2 Schematic circuit diagram



Single phase

Fig.8

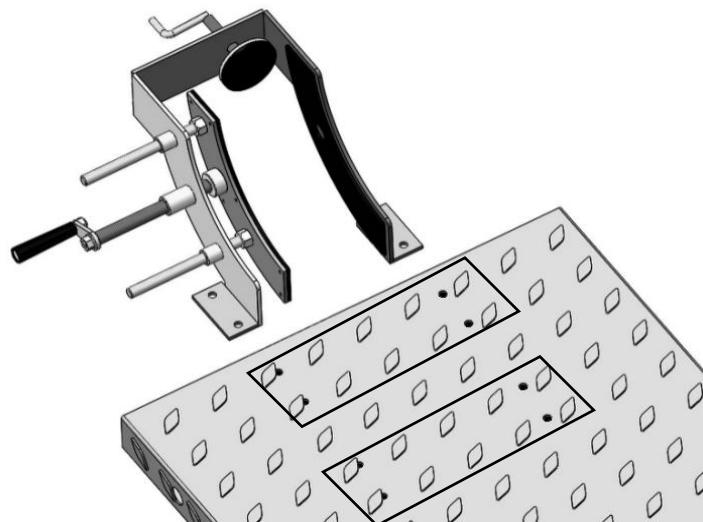
Circuit component

Item	Name	Code	Specification	Item	Name	Code	Specification
1	Power switch	QS	380V AC	7	Switch	UP	Single
2	Breaker	FU <sub>1</sub>	2P	8	Switch	Down	Single
3	Breaker	FU <sub>2</sub>	1P	9	Indicator	R	White (24V)
4	Breaker	FU <sub>3</sub>	1P	10	Transformer	TC	24V AC
5	AC contactor	KM	24V AC	11	Motor	M	Single Phase
6	Hydraulic solenoid valve	Y	AC 24V				

**E.Tighten all the oil hose fittings securely and fill the power unit with right amount hydraulic oil (In order to ensure the service life of the hydraulic system and keep the lift in best performance, please fill No.46 high-quality anti-wear hydraulic oil.)**

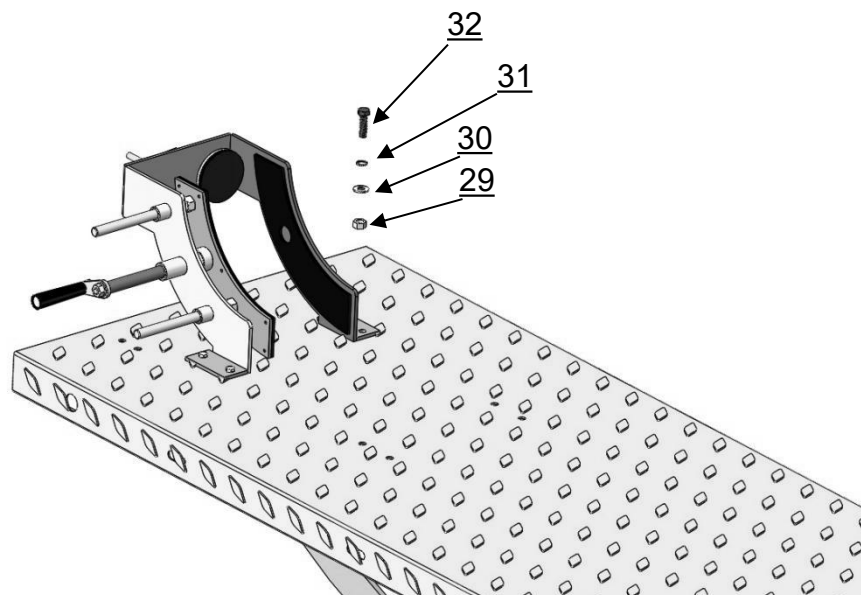
**F.Install adjustable wheel vise . (See Fig 9)**

1. The wheel vise can be installed in two positions on the platform, allowing users to choose their preferred installation position.



**Fig.9**

2. Lifting the motorcycle lift to a suitable height, install the wheel vise as to below photo.



**Fig.10**

3.Wheel vise

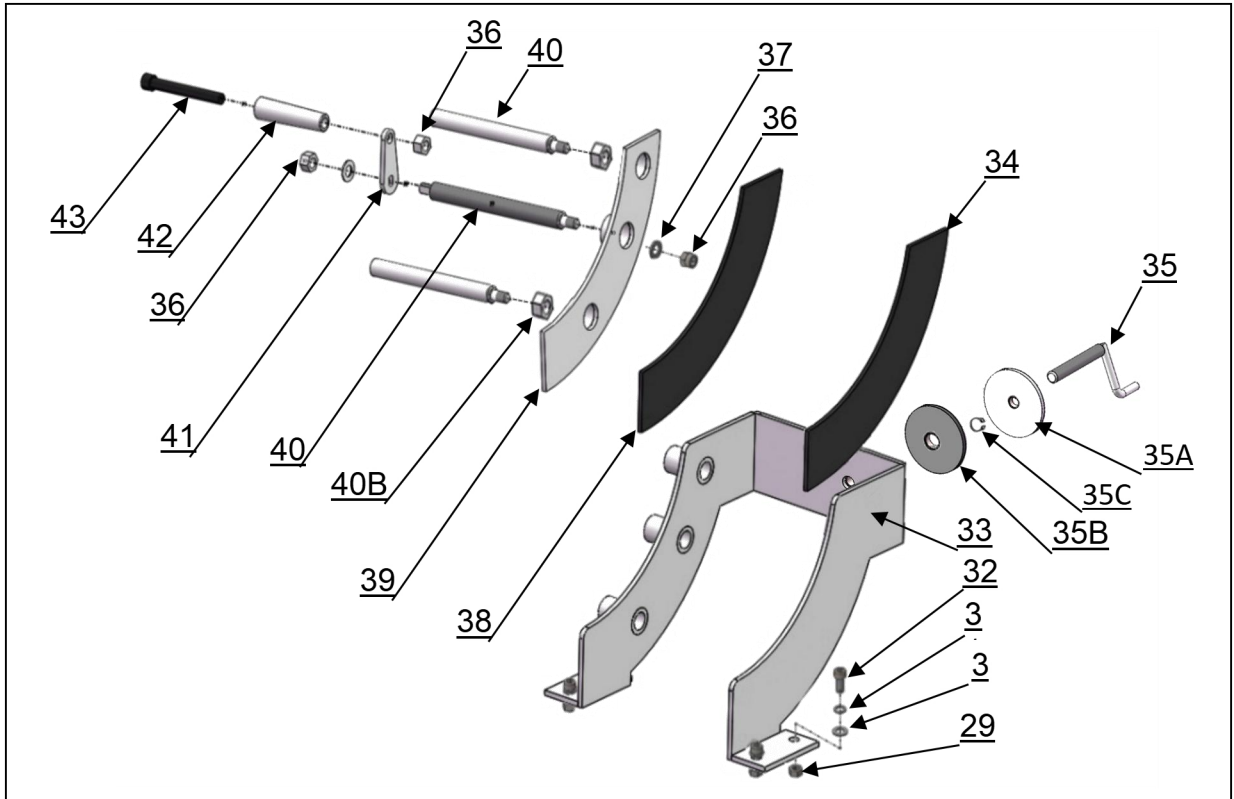


Fig. 11

F. Install Optional Width Extension Kit(MC001). See Fig.12

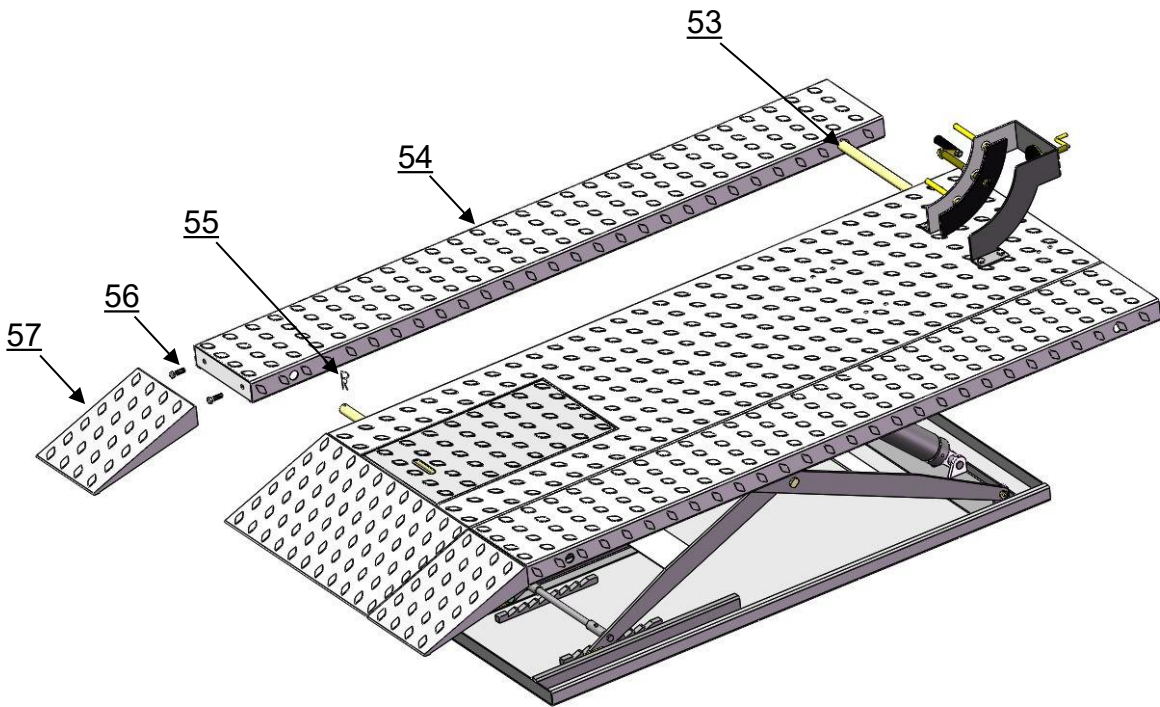
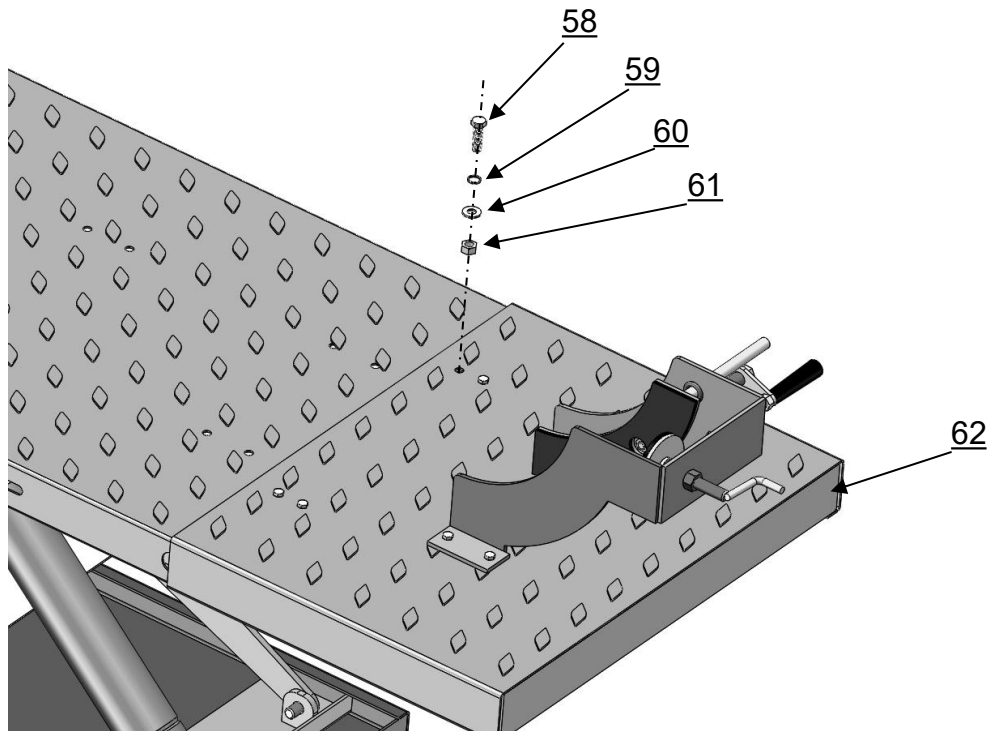


Fig. 12

**G. Install Optional Length Extension Kit (MC002) . See Fig 13**

Note: Connect the length extension kit to one of the wheel vise install holes on the platform. Move the wheel vise to extension platform.



**Fig.13**

# IV. EXPLODED VIEW

MODEL: MC-600

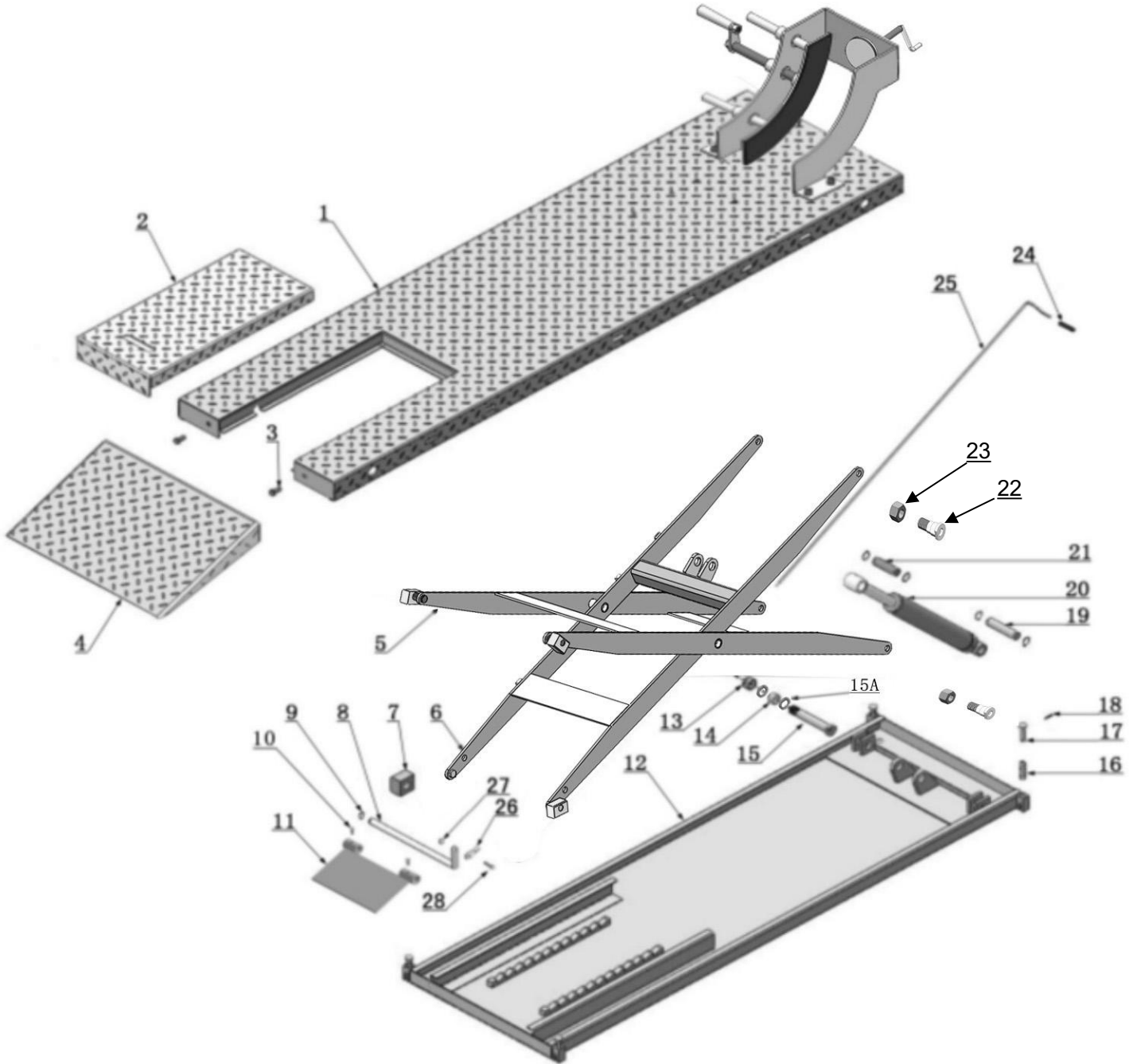


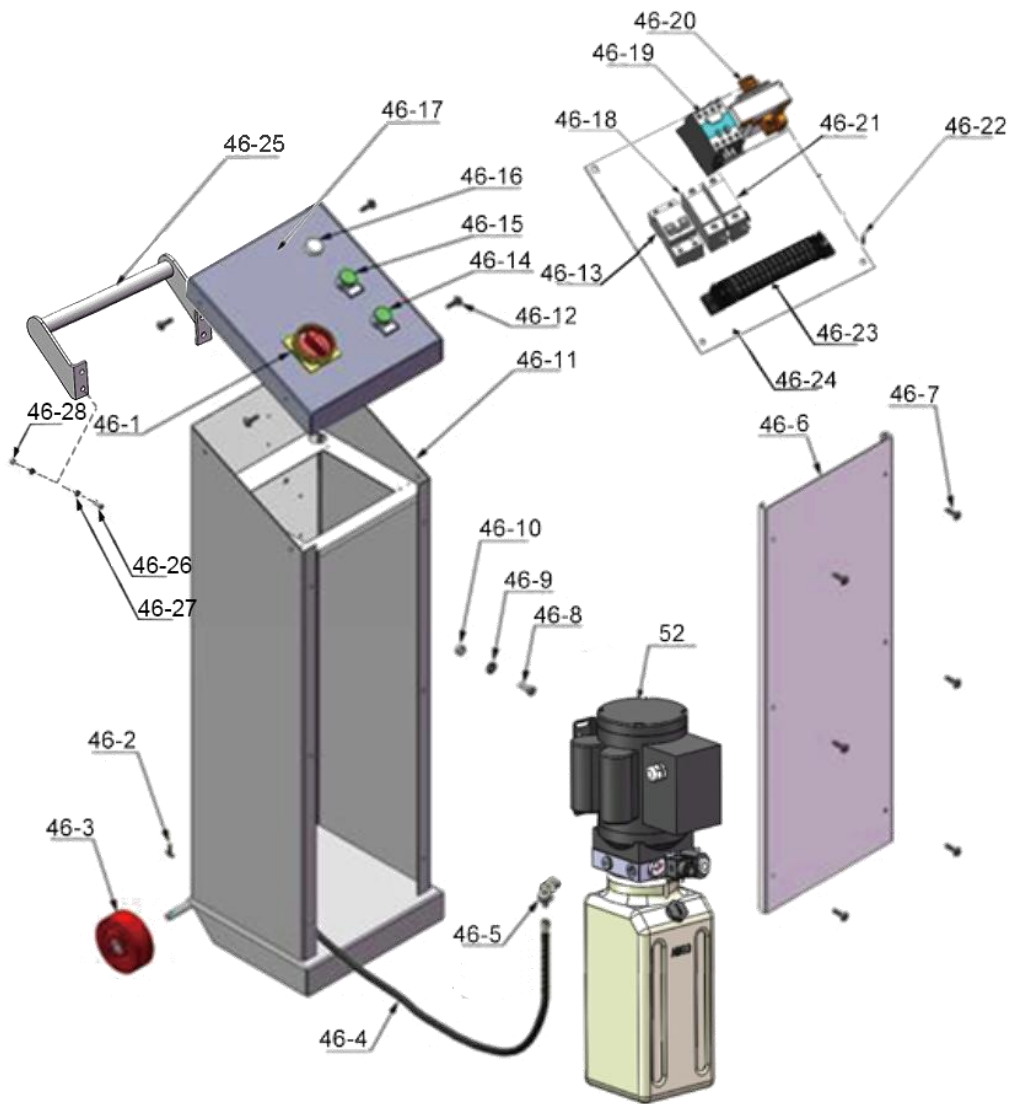
Fig.14

## Parts list of Lift

Item	Part#	Description	QTY.	Note
1	11720118-01	Platform	1	
2	11720723	Cover plate of Platform	1	
3	10217069	Hex bolt	2	
4	11720123	Drive-in ramp	1	
5	11720120-01	Outer scissor	1	
6	11720119-01	Inner scissor	1	
7	1003105001	Slider 60*42*33	4	
8	11720122-01	Pin for safety device	1	
9	10206019	Clip ring $\phi$ 19	1	
10	10640050	Socket bolt M6*10	2	
11	11720026-01	Safety device	1	
12	11720027-02	Base	1	
13	1003085004	Nylok nut M18	2	
14	1002011001	Steel bush $\phi$ 22* $\phi$ 19*14	4	
15	11720007-01	Pin for Scissors $\phi$ 29*95	2	
15A	10510053	Washers $\Phi$ 24* $\Phi$ 19.5*1.8	6	
16	10720003	Spring $\phi$ 2*75	4	
17	11720012A-01	Pin for Spring	4	
18	10209025	Snap Pin $\phi$ 4*25	6	
19	11640006A	Cylinder Base Pin $\phi$ 25*112	1	
20	10640007	Cylinder $\phi$ 63*290	1	
21	11640057	Pin for Cylinder Connecting	1	
22	1103082011	Pins Assembly	12	
23	10650024	Nylok Nut M16	4	
24	10620136	Rubber tube	1	
25	11720111-01	Connecting pin for safety lock	1	
26	11720110	Connecting sleeve	1	
27	10420018	Nylok Nut M6	1	
28	10720102	Socket bolt M6*18	1	
29	10209021	Hex nut M10	4	
30	10209022	Washer $\phi$ 10	4	
31	10209039	Lock Washer $\phi$ 10	4	
32	10720002	Socket bolt M10*25	4	
33	1103083015	Wheel vise fixing seat	1	
34	1103083011	Support plate (Left)	1	
35	1103083022	Positioning adjustment screw rod	1	
35A	1103083019	Positioning plate	1	
35B	1003083002	Rubber pad 90*90*5	1	
35C	10630032	Clip ring $\phi$ 12	1	
36	10206023	Nylok Nut M12	3	

Item	Part#	Description	QTY.	Note
37	10206006	Washer φ12	6	
38	1103083010	Support plate (Right)	1	
39	1103083016	Wheel vise moving board	1	
40	1103083012	Adjusting Pin	1	
40A	1103083009	Guide Pillar	2	
40B	10209066	Hex Nut M16	2	
41	1103083007	Handle Connecting Board	1	
42	1103083017	Control Handle	1	
43	10410040	Socket Bolt M12*110	1	
44	10209064	Straight fitting 1/4NPT(M)*1/4JIC(M)	1	
45	10206156	Tool tray	1	
46	10720116	Control Cabinet	1	
47	10620071	Anchor bolt M10*100	4	
48	11720100	Tool tray bracket	1	
49	10720014	Securing belt (Optional)	1	
50	86010782	Wheel vise assy.	1	
51	10640050	Socket BoltM6*10	2	
52	81523035	Power unit	1	
<b>Optional: Width extension kits (MC001)</b>				
53	11720036-01	Connecting pin	2	
54	11720035-01	Width extension platform	2	
55	10209012	Snap pin φ3.2	4	
56	10217069	Hex bolt M12*30	4	
57	11720034	Width extension drive-in ramp	2	
<b>Optional: Length Extension kits (MC002)</b>				
58	10209126	Hex bolt M10*25	4	
59	10209039	Lock Washerφ10	4	
60	10209022	Washerφ10	4	
61	10209021	Hex nut M10	4	
62	11720126	Extension platform	1	

## 4.1 Control Cabinet (10720116)



**Fig.15**

## Parts for Control cabinet

Item	Part#	Description	QTY.	Note
46-1	41010217	Power Switch	1	
46-2	1061K104	Split Pin	2	
46-3	1003275021	White wheel	2	
46-4	10440042	Oil hose	1	
46-5	10209060	90° Fitting for power unit 3/8SAE0/R(M)*1/4JIC(M)	1	
46-6	11720082	Cabinet cover	1	
46-7	1003127001	socket bolt M6*30	6	
46-8	10209003	Hex bolt	4	
46-9	10209004	Rubber ring	8	
46-10	10209005	Self-locking nut	4	
46-11	11720053	Cabinet	1	
46-12	10209145A	Cup head bolt	4	
46-13	10202046	Breaker 2P	1	
46-14	10420070	Down button	1	
46-15	10420070	Up button	1	
46-16	10201094	Indicator (White)	1	
46-17	11720052	Control panel	1	
46-18	10202049	Breaker 1P	1	
46-19	10420084A	24V Contactor	1	
46-20	10420134	24V Transformer(TC)	1	
46-21	10202051	Breaker 1P	1	
46-22	1061K052	Cup head bolt	12	
46-23	10620082	Connecting terminal	1	
46-24	1052K006A	Panel for electric components	1	
46-25	11720696	Control panel	1	
46-26	10420153	Cup head bolt M6*20	4	
46-27	10420045	Washerφ10	8	
46-28	10420018	Nyloc Nut M6	4	

## 4.2 Cylinder (10640007)

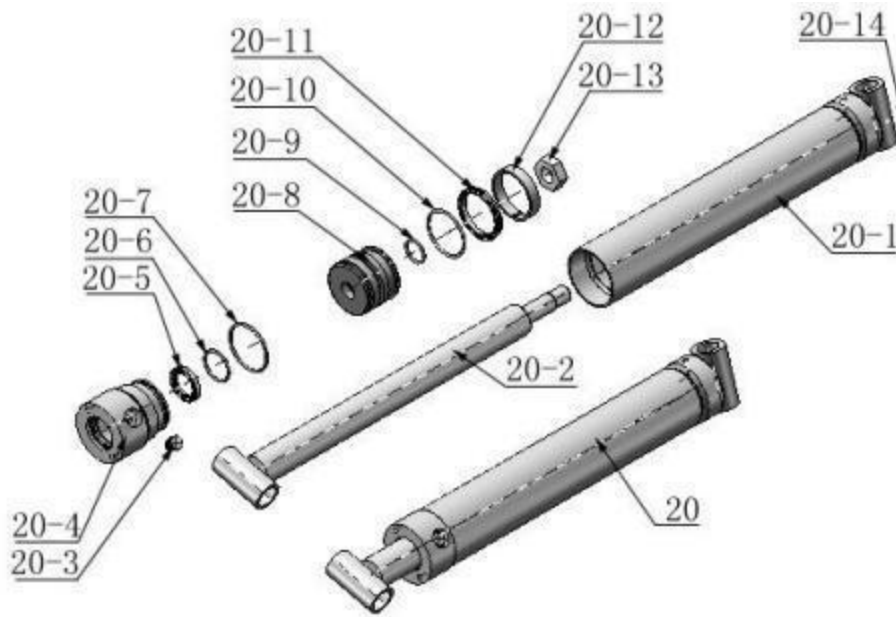


Fig.16

### Parts for cylinder

Item	Part#	Description	QTY.	Note
20-1	11640030A	Bore Weldment	1	
20-2	11640031A	Piston Rod	1	
20-3	10201034	Bleeding Plug	1	
20-4	11201033	Head Cup	1	
20-5	10209078	Dust Ring	1	
20-6	10201032	O Ring	1	
20-7	10201035	O Ring	1	
20-8	11201028	Piston	1	
20-9	10206069	O Ring	1	
20-10	10201031	O Ring	1	
20-11	10201030	Y Ring	1	
20-12	10201029	Support Ring	1	
20-13	10206071	Nut	1	
20-14	10620064	Oil nozzle	2	

## Illustration of hydraulic valve for power unit

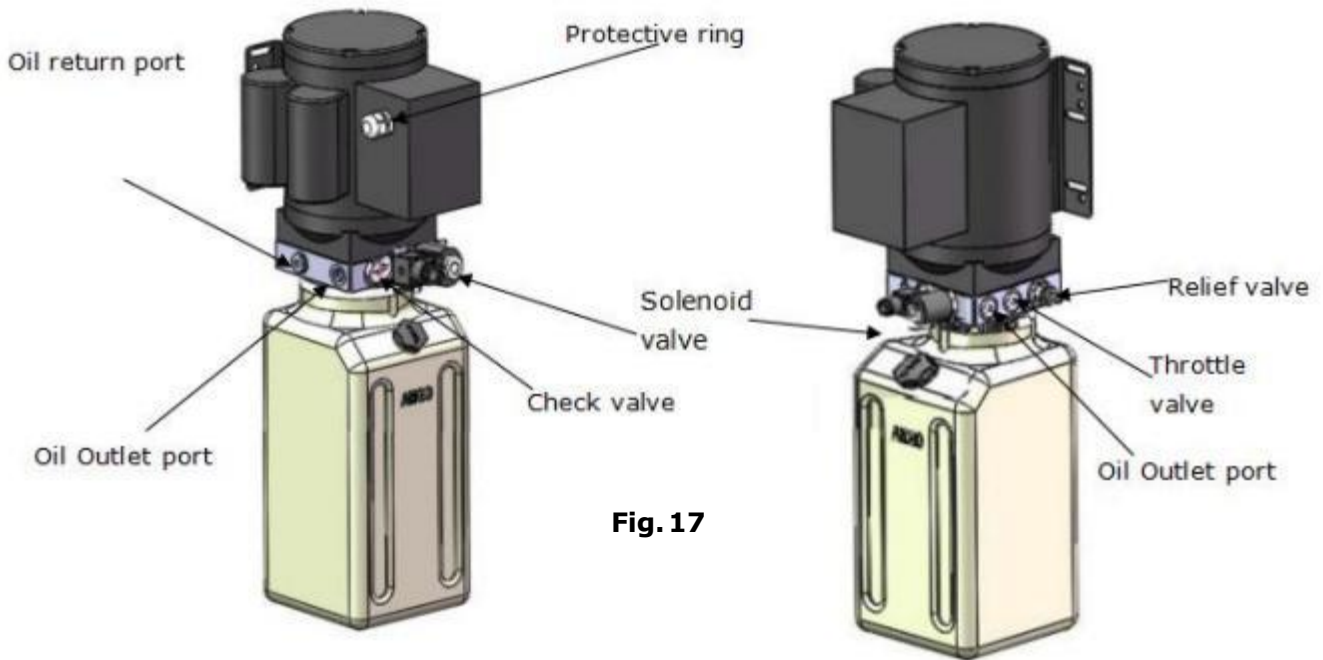


Fig. 17

## V. TEST RUN

### 1. Install anchor bolts. (see Fig.18)

Install the anchor bolts to fix the machine after installing.

Note: Twisting force is 150N.m for fixing the anchor bolt, knock the anchor bolt into the ground at least 80mm.

#### Steps:

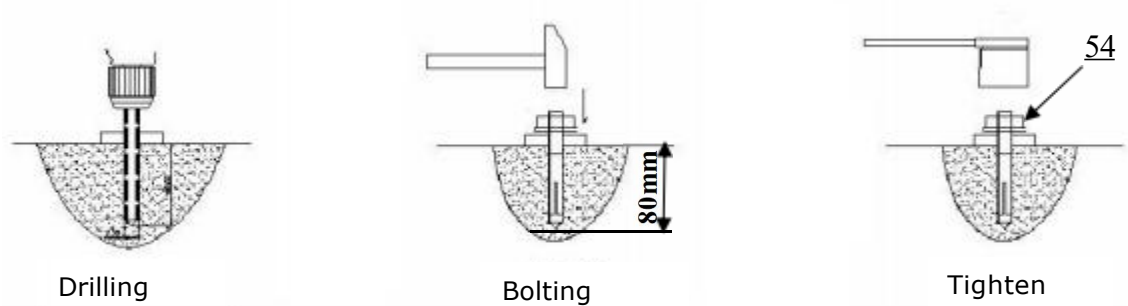
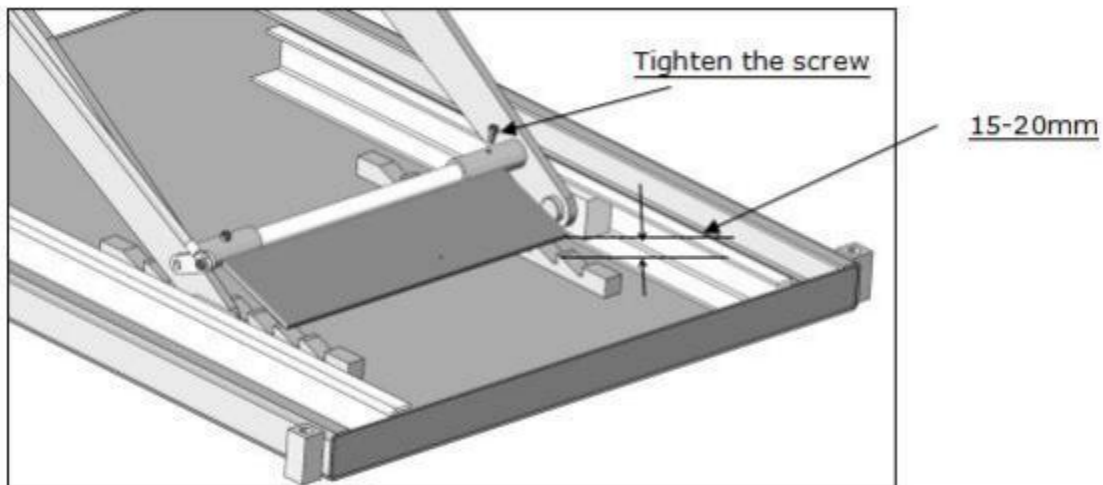
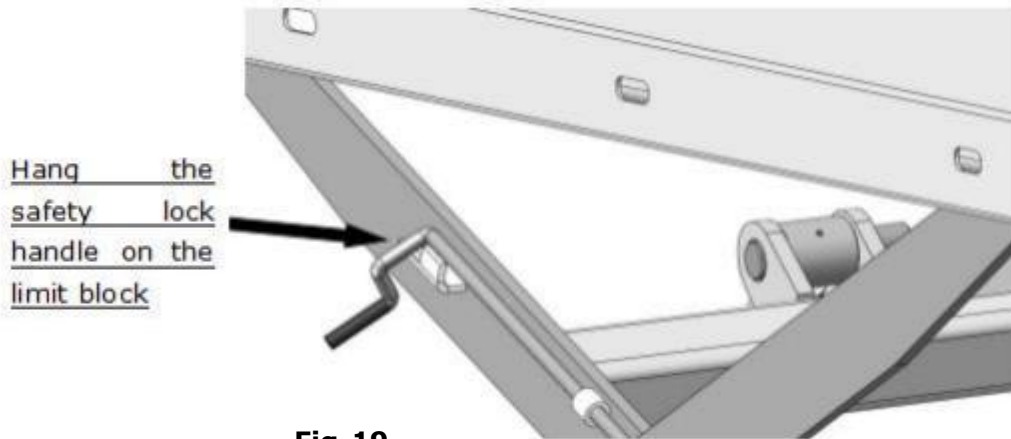


Fig. 18

## 2. Adjustment of Safety device

Raise the lift to the highest position (See Fig. 19), hang the safety lock handle on the limit block. Loosen then connecting screw with hex wrench, lift up the safety lock plate away from the rack about 15-20mm (See Fig.20), then tighten the screw .



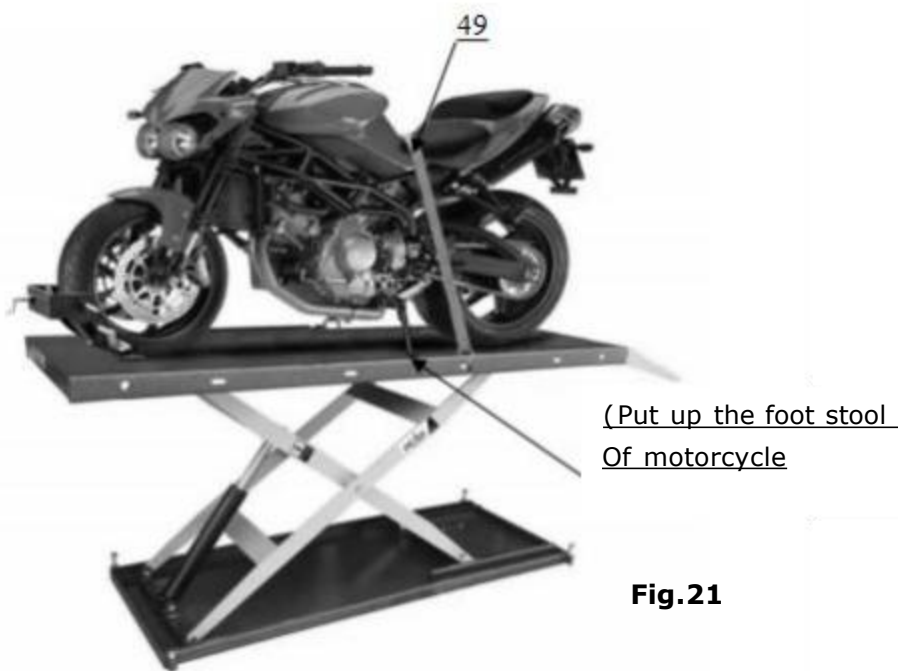
## VI. OPERATION INSTRUCTIONS

**1. Install well the oil hose between cylinder and power unit, connected the wire, the motorcycle lift can be operated.**

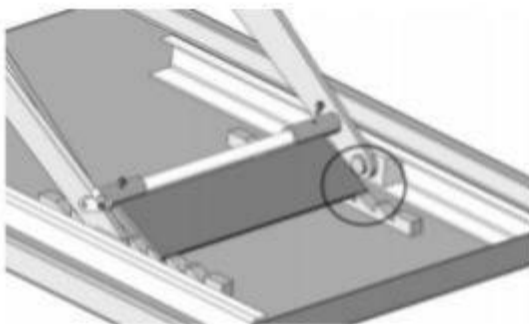
**2. Rise up the lift without motorcycle for testing.**

**3. To lift motorcycle**

Lower the lift to the lowest position, loosen the wheel vise. Move the motorcycle to the platform, put the front wheel into the wheel vise, set well the motorcycle. Put up the foot stool of the motorcycle. Rotated handle to clamp the wheel. Tighten the securing belt. Make sure the wheel is tightened and the securing belt is fixed before using. (See Fig.21)

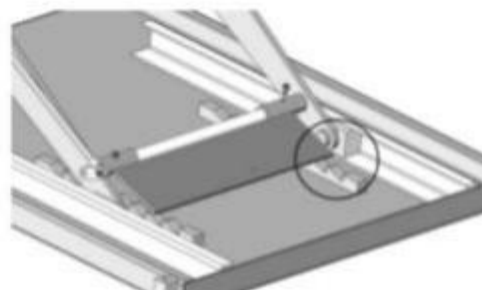


**4. To lower the lift:** Rise the lift few seconds. Rotate the safety lock handle downward (**see Fig.22**) to release the safety device. After the safety device is released (**see Fig.23**), press **DOWN** button to lower the lift.



Safety device is locked

**Fig.22**



Safety device is released

**Fig.23**

## VII. MAINTENANCE SCHEDULE

### Monthly maintenance:

1. Lubricate all moving parts with lubricant.

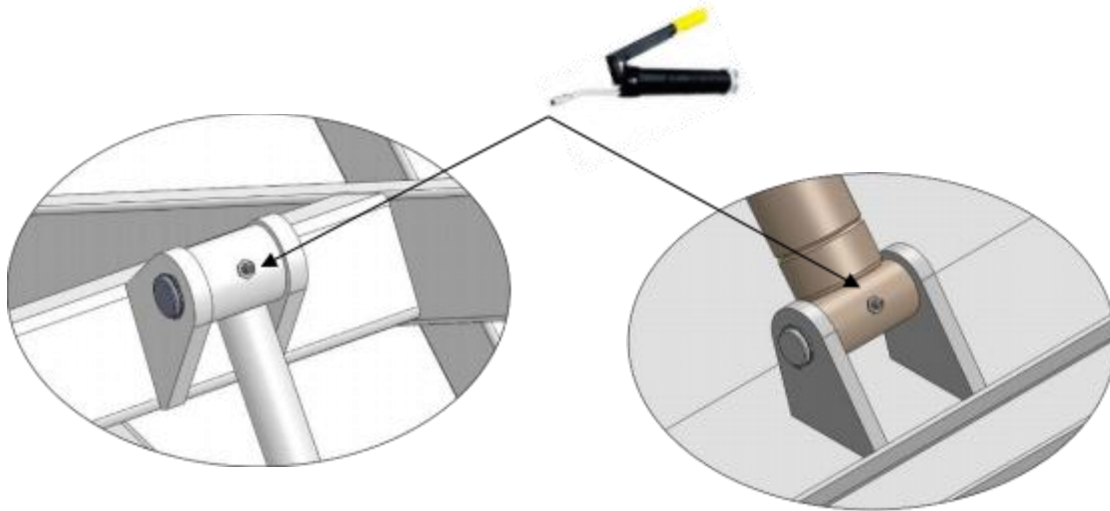


Fig.24

2. Check all connectors, bolts and pins to insure proper mounting.
3. Make a visual inspection of all hydraulic hoses/lines for possible wear or leakage.

### Every six months:

1. Make a visual inspection of all moving parts for possible wear, interference or damage.
2. Check all fasteners and re-torque

### Oil cylinder maintenance:

In order to extend the service life of the oil cylinder, please operate according to the following requirements.

1. Recommend to use N46 anti-wear hydraulic oil.
2. The hydraulic oil of the lifts should be replaced regularly during using. Replace the hydraulic oil 3 months after the first installation, Replace the hydraulic oil once a year afterwards.
3. Make at least one full trip raising and lowering per day. For exhausting the air from the system, which could effectively avoid the corrosion of the cylinder and damage to the seals caused by presence of air or water in the system.
4. Protect the outer surface of the oil cylinder's piston rod from bumping and scratching, and timely clean up the debris on the oil cylinder dust-ring and the piston rod.

## VIII.TROUBLE SHOOTING

NO	TROUBLE	CAUSE	REMEDY
1	Motor does not run	<ol style="list-style-type: none"> <li>1. Button does not work</li> <li>2. Wiring connections are not in good condition</li> <li>3. Motor burned out</li> <li>4. AC contactor burned out</li> </ol>	<ol style="list-style-type: none"> <li>1. Replace button</li> <li>2. Repair all wiring connections</li> <li>3. Repair or replace motor</li> <li>4. Replace AC Contactor</li> </ol>
2	Motor runs but the lift is not raised	<ol style="list-style-type: none"> <li>1. Motor runs in reverse rotation</li> <li>2. Release Valve in damage</li> <li>3. Gear Pump out of operation</li> <li>4. Relief Valve or Check Valve in damage</li> <li>5. Low oil level</li> <li>6. Overload lifting or low pressure</li> </ol>	<ol style="list-style-type: none"> <li>1.Reverse two power wire</li> <li>2. Repair or replace</li> <li>3. Repair or replace</li> <li>4. Repair or replace</li> <li>5. Fill tank</li> <li>6.Check load or adjust the pressure</li> </ol>
3	Lift does not stay up	<ol style="list-style-type: none"> <li>1. Release Valve out of work</li> <li>2. Relief Valve or Check Valve leakage</li> <li>3. Cylinder or Fittings leaks</li> </ol>	<p>Repair or replace</p> <p>Repair or replace</p> <p>Replace fitting and oil seal</p>
4	Lift rises slowly	<ol style="list-style-type: none"> <li>1. Oil line is jammed</li> <li>2.Motor running on low voltage</li> <li>3. Oil mixed with air</li> <li>4. Gear Pump leaks</li> <li>5. Overload lifting</li> </ol>	<ol style="list-style-type: none"> <li>1. Clean the oil line</li> <li>2. Check Electrical System</li> <li>3. Fill tank</li> <li>4. Repair or replace</li> <li>5. Check load</li> </ol>
5	Lift cannot lower	<ol style="list-style-type: none"> <li>1. Safety device are not in activated</li> <li>2. Release Valve in damage</li> <li>3. Oil system is jammed</li> </ol>	<ol style="list-style-type: none"> <li>1. Release the safety device</li> <li>2. Repair or replace</li> <li>3. Clean the oil system</li> </ol>

## IX. Lift disposal.

When the car lift cannot meet the requirements for normal use and needs to be disposed, it should follow local laws and regulations.



## **PEAK COPERATION**

No. 3 Luomu Road, Shishan Town, Nanhai District, Foshan(528225), Guangdong, China

Tel:86-757-81102815 81102805

Fax: 86-757-81102809

Email:peak@peaklift.cn

<http://www.peaklift.cn>

Manual Part No.: 72275512

Revision Date: 2023/09