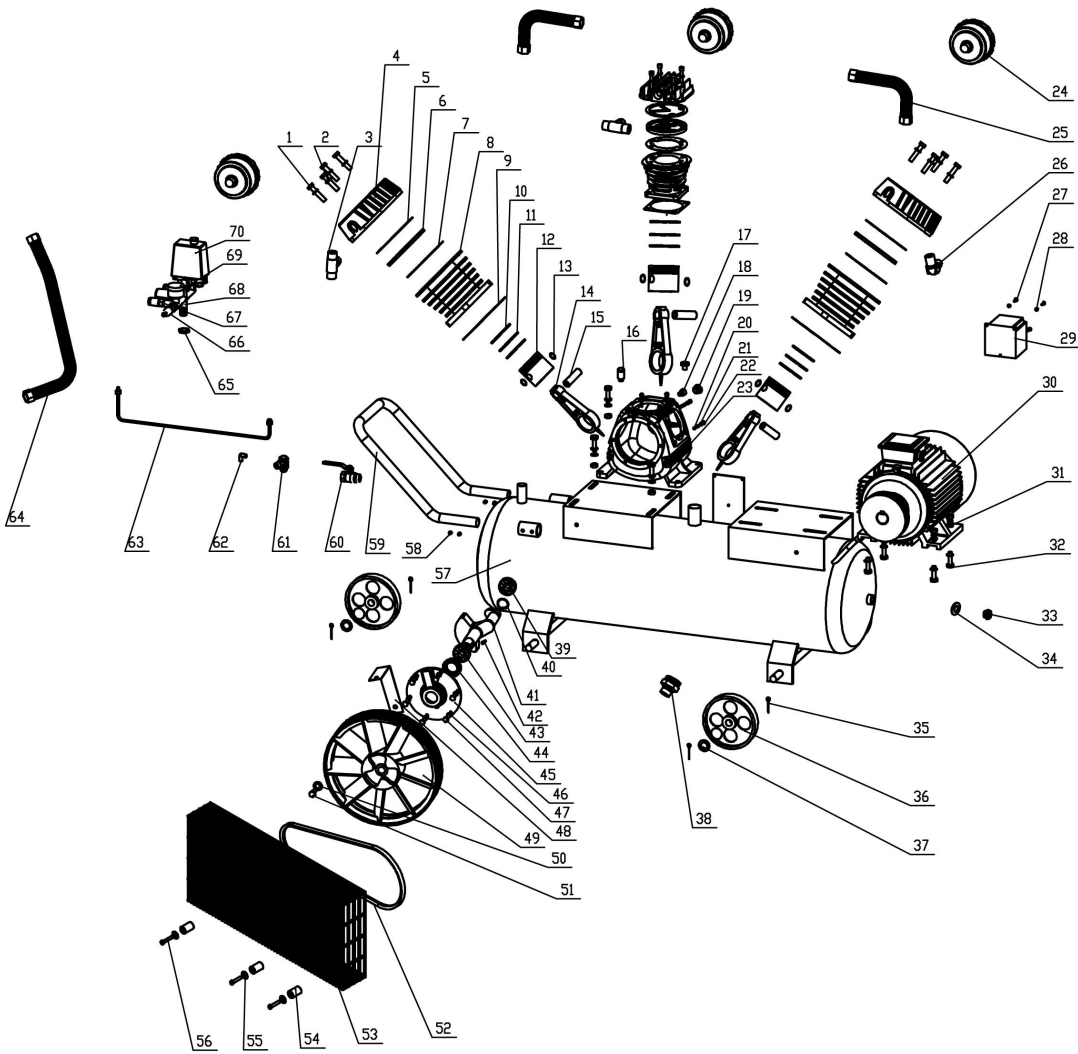


TD65-150L/200L



TD65-150/200L Parts List

NO	PART	QTY	NO	PART	QTY
1	内六角螺栓 Hex Bolts M8×55	12	36	轮子 Wheel	4
2	弹簧垫圈 Spring washer φ8	12	37	垫片 Flat pad φ20	8
3	三通弯头 Tee Elbow	2	38	排水塞 Drain plug R3/8	1
4	缸盖 Head	3	39	轴承 Bearing 6204	1
5	缸盖垫 Head pad	3	40	挡圈 Collar Φ30	1
6	阀板 Valve plate	3	41	曲拐 Crank	1
7	阀板垫 Valve plate mats	3	42	半圆销 Semicircle off	1
8	气缸 CylinderΦ80	3	43	轴承 Bearing 6205	1
9	气缸垫 Cylinder Head Gasket	3	44	油封 Seal	1
10	气环 Gas ringΦ80	6	45	轴承座 Bearing	1
11	油环 Oil RingΦ80	3	46	平垫 Flat pad φ8	12
12	活塞 PistonΦ80	3	47	外六角螺栓 Hex Bolts M8X25	12
13	挡圈 Collar Φ15	6	48	网罩固定铁片 Nets fixed slice	1
14	连杆 Link	3	49	皮带轮子 Pulley child Φ260/A	1
15	活塞销 Piston pin	3	50	大平垫 Flat pad	1
16	呼吸器 Respirator	1	51	螺栓 Hex Bolts M8X30	1
17	油孔塞 Plug hole	1	52	三角带 Triangle	1
18	放油螺钉 Oil discharge screw	1	53	网罩 Nets	1
19	油标 Oil standard	1	54	塑料垫 Plastic mat	8
20	双头螺柱 Bolt M10X35	12	55	平垫 Flat pad φ5	3
21	弹簧垫圈 Spring washer φ10	20	56	外六角螺栓 Hex Bolts	3
22	螺母 Screw nut M10	20	57	储气罐 Gas tank	1
23	曲轴箱 Crankcase	1	58	内六角螺栓 Hex Bolts M5	4
24	空气滤清器 Air Filters	3	59	手柄 Handle	1
25	高压管连接管 High pressure connecting pipe	2	60	球阀 Release valve R1/2	1
26	直角弯头 Right Angle Elbow	1	61	单向阀 Check valve	1
27	十字螺钉 Phillips screws M4X30	3	62	直角弯头 Right Angle Elbow 1/8-M10	1
28	螺母 Screw nut M4	3	63	卸荷管 Unloading pipe	1
29	磁力启动器 Magnetic starter	1	64	高压管 High pressure	1
30	三相电机 Three-phase motor	1	65	并紧螺母 And nuts Rp1/2	1
31	平垫 Flat pad φ10	8	66	安全阀 Safety valve	1
32	螺栓 Bolt M10X45	8	67	快速接头 Quick Connector	2
33	堵头 Plug R1/2	1	68	调压阀 Regulator	1
34	O型圈 O-Ring	1	69	压力表 Pressure gauge	2
35	3#开口销 Cotter pin	8	70	压力开关 Pressure Switch	1