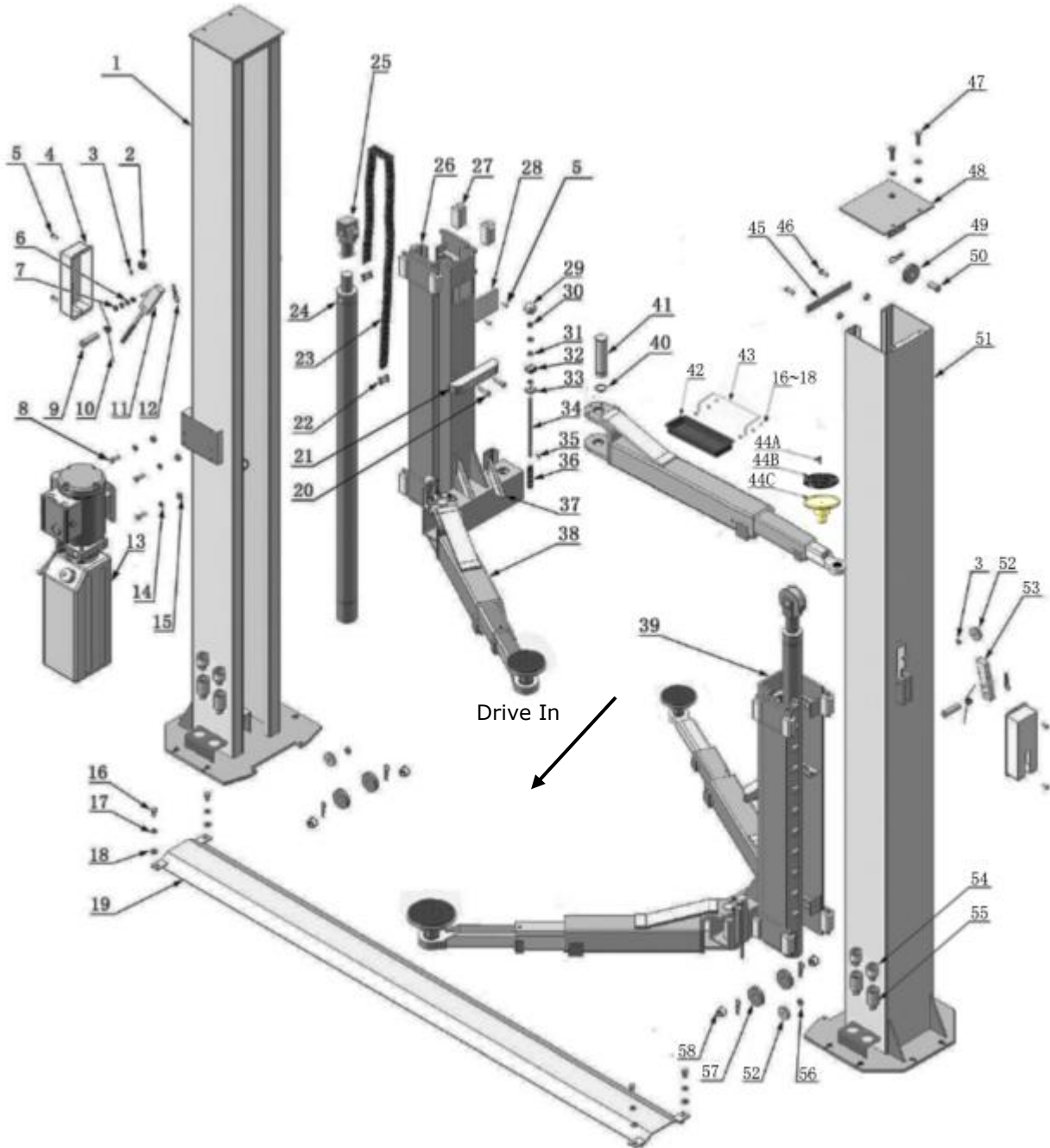


EXPLODED VIEW

Model 208



PARTS LIST

| Item | Part# | Description | Qty. | Note |
|------|--------------|------------------------------------|------|------|
| 1 | 11201001C | Powerside column | 1 | |
| 2 | 10209011 | Plastic Pulley | 1 | |
| 3 | 10209010 | Snap Ring | 2 | |
| 4 | 10209008 | Safety Cover | 2 | |
| 5 | 10209009 | Cup Head Bolt | 10 | |
| 6 | 10206023A | Hex Nut | 2 | |
| 7 | 10206006 | Washer | 2 | |
| 8 | 10209003 | Hex Bolt | 4 | |
| 9 | 1102011004A | Safety Pin | 2 | |
| 10 | 10209007 | Safety Spring | 2 | |
| 11 | 11209013 | Power-side Safety Lock | 1 | |
| 12 | 10209012 | Hair Pin | 8 | |
| 13 | 81513001 | Power Unit (220V/50Hz Single | 1 | |
| | 81513002 | Power Unit (380V/50Hz Three Phase) | | |
| 14 | 10209004 | Rubber Ring | 4 | |
| 15 | 10209005 | Self locking nut | 8 | |
| 16 | 10201002 | Hex Bolt | 12 | |
| 17 | 10209034 | Lock Washer | 12 | |
| 18 | 10209033 | Washer | 12 | |
| 19 | 11201003 | Floor Cover | 1 | |
| 20 | 10206046 | Self-tapping Screw | 4 | |
| 21 | 10206045 | Protective Rubber | 2 | |
| 22 | 10201010 | Chain Connector | 4 | |
| 23 | 10201009A | Chain | 2 | |
| 24 | 10201008B-01 | Hydraulic Cylinder | 2 | |
| 25 | 11201704 | Chain Pulley Sea Assy. | 2 | |
| 26 | 11201011B | Powerside Carriage | 1 | |
| 27 | 10206044 | Slider Block | 16 | |
| 28 | 11201038 | Carriage Plastic Cover | 2 | |
| 29 | 10209020 | Plastic Ball | 4 | |
| 30 | 10209021 | Hex Nut | 8 | |
| 31 | 10209022 | Washer | 10 | |
| 32 | 10209023A | Arm Lock | 4 | |
| 33 | 11201041 | Limit Ring | 4 | |
| 34 | 11209024 | Arm Lock Bar | 4 | |
| 35 | 10209025 | Hair Pin | 4 | |
| 36 | 10209026 | Spring | 4 | |
| 37 | 10209027 | Protective Rubber Set | 4 | |
| 38 | 10201043A | Lifting Arm assy. | 4 | |
| 39 | 11201015B | Offside Carriage | 1 | |
| 40 | 10520023 | Snap Ring | 4 | |
| 41 | 11209030A | Arm Pin | 4 | |
| 42 | 10206190 | Tool tray(Short) | 2 | |

| Item | Part# | Description | Qty. | Note |
|-------------|--------------|-----------------------------------|-------------|-------------|
| 43 | 11206191 | Short guardrail | 4 | |
| 44 | 10201046A | Rubber Pad Assy. | 4 | |
| 44A | 10420138 | Socket bolt | 4 | |
| 44B | 10209134 | Rubber Pad | 4 | |
| 44C | 11680030C | Rubber Pad Frame | 4 | |
| 45 | 11201017 | Connecting Bar | 2 | |
| 46 | 10209043 | Hex Bolt | 4 | |
| 47 | 10209046 | Hex Bolt | 4 | |
| 48 | 11201018 | Top plate | 2 | |
| 49 | 1102012001 | Pulley | 2 | |
| 50 | 1102011005A | Pin for Pulley | 2 | |
| 51 | 11201019C | Offside column | 1 | |
| 52 | 10209049 | Plastic Pulley | 3 | |
| 53 | 11209050 | Offside Safety Lock | 1 | |
| 54 | 11209051B | Stackable Adapter (1.5") | 4 | |
| 55 | 11209052B | Stackable Adapter (2.5") | 4 | |
| 56 | 10209056 | Self locking nut | 2 | |
| 57 | 1102011001 | Pulley | 4 | |
| 58 | 1002011001 | Steel Bush | 6 | |
| 59 | 10201025A | Cable | 2 | |
| 60 | 10209066 | Hex Nut | 12 | |
| 61 | 10207024 | 90° fitting | 2 | |
| 62 | 11201082 | Extend straight fitting | 2 | |
| 63 | 10420097 | 90° fitting | 2 | |
| 64 | 10201080 | Oil hose 1/4*1410mm | 2 | |
| 65 | 10211016 | T fitting | 1 | |
| 66 | 10209059-01 | Oil Hose 1/4*2980mm | 1 | |
| 67 | 10209060 | 90° Fitting for Manual Power Unit | 1 | |
| 68 | 11217048 | Retainer | 2 | |
| 69 | 10201026A | Safety Cable | 1 | |
| 70 | 10209059 | Anchor Bolt | 12 | |
| 71 | 10201500A | Parts Box | 1 | |
| 72 | 10620065 | Shim 2mm | 10 | |
| | 10201090 | Shim 1mm | 10 | |

4.1 Chain Pulley Base Assy (11201704) exploded view:

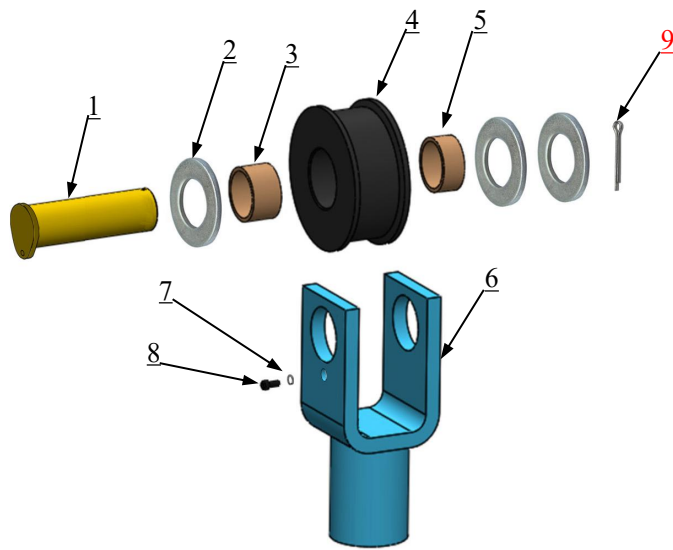


Fig. 30

| Item | Part# | Description | Qty. |
|------|----------------|--|------|
| 1 | 1102015001A | Pin for chain pulley | 1 |
| 2 | 10203004A | Bronze bush $\phi 31 * \phi 25.1 * 21$ | 1 |
| 3 | 10640109 | Washer $\phi 44 * \phi 25.2 * 2$ | 1 |
| 4 | 1102023002 | Chain Pulley $\phi 105 * 41$ | 1 |
| 5 | 10217020 | Bronze bush $\phi 31 * \phi 25.1 * 16$ | 1 |
| 6 | 1102023001A-01 | Chain Pulley Seat | 1 |
| 7 | 10209034 | Lock Washer $\phi 8$ | 1 |
| 8 | 10680003 | Hex Bolt M8*12 | 1 |
| 9 | 10201005 | Split Pin | 1 |

4.2 Lifting arm Assy. (10201043A) exploded view:

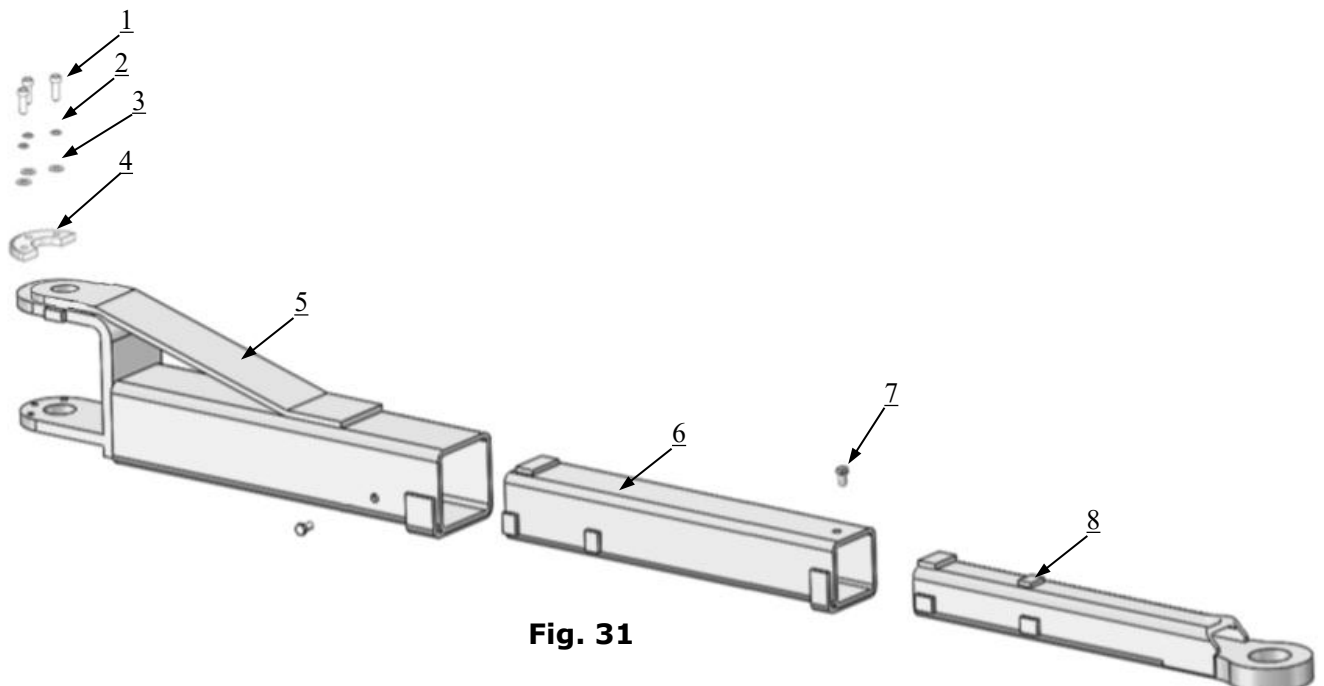


Fig. 31

| Item | Part# | Description | Qty. |
|------|-----------|---------------------|------|
| 1 | 10209032 | Socket Bolt | 12 |
| 2 | 10209034 | Lock washer | 12 |
| 3 | 10209033 | washer | 12 |
| 4 | 11209035 | Moon Gear | 4 |
| 5 | 11201047 | Outer arm | 4 |
| 6 | 11201048 | Middle arm | 4 |
| 7 | 10201149 | Cut Head Bolt M8*12 | 8 |
| 8 | 11201049A | Inner arm | 4 |

4.3 Cylinder (10201008B-01) exploded view:

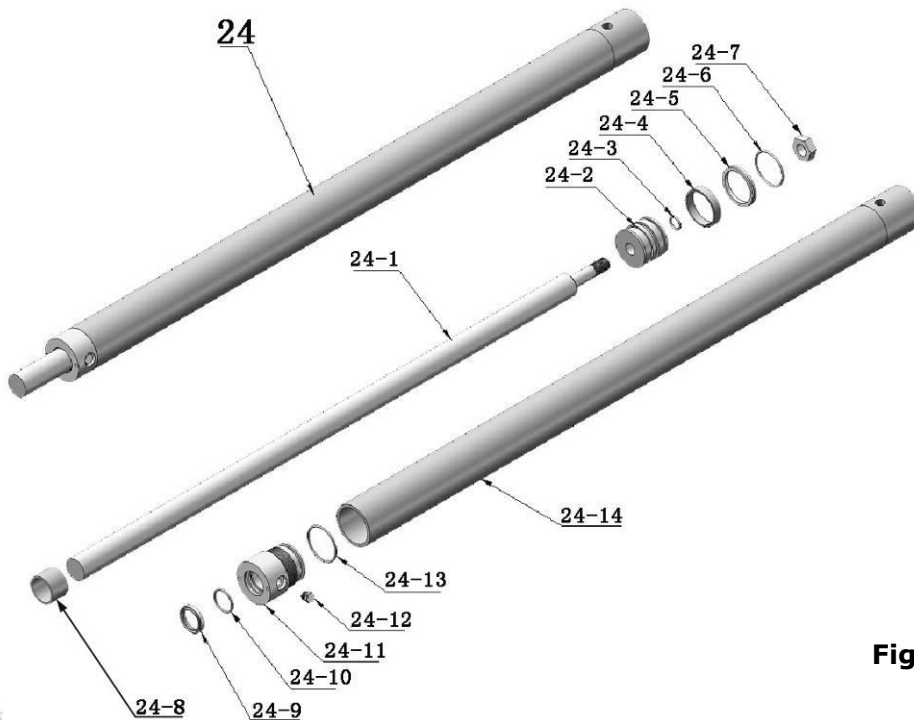


Fig. 32

Parts of Cylinder

| Item | Part# | Description | Qty. |
|-------|--------------|-----------------------------|------|
| 24-1 | 1102016013 | Piston rod | 2 |
| 24-2 | 1102016015 | Piston | 2 |
| 24-3 | 10206069 | O ring | 2 |
| 24-4 | 10217071 | Support ring | 2 |
| 24-5 | 1002016003 | Y ring | 2 |
| 24-6 | 10217073 | O ring | 2 |
| 24-7 | 10206071 | Hex Nut | 2 |
| 24-8 | 1102016011 | Piston rod adjusting sleeve | 2 |
| 24-9 | 10209078 | Dusty ring | 2 |
| 24-10 | 10217300 | O ring | 2 |
| 24-11 | 1102016016 | End cover | 2 |
| 24-12 | 10201034 | Bleeding plug | 2 |
| 24-13 | 10580070 | O ring | 2 |
| 24-14 | 11201036B-01 | Cylinder weldment | 2 |

4.4 Manual Power Unit (81513001/81513002) exploded view:

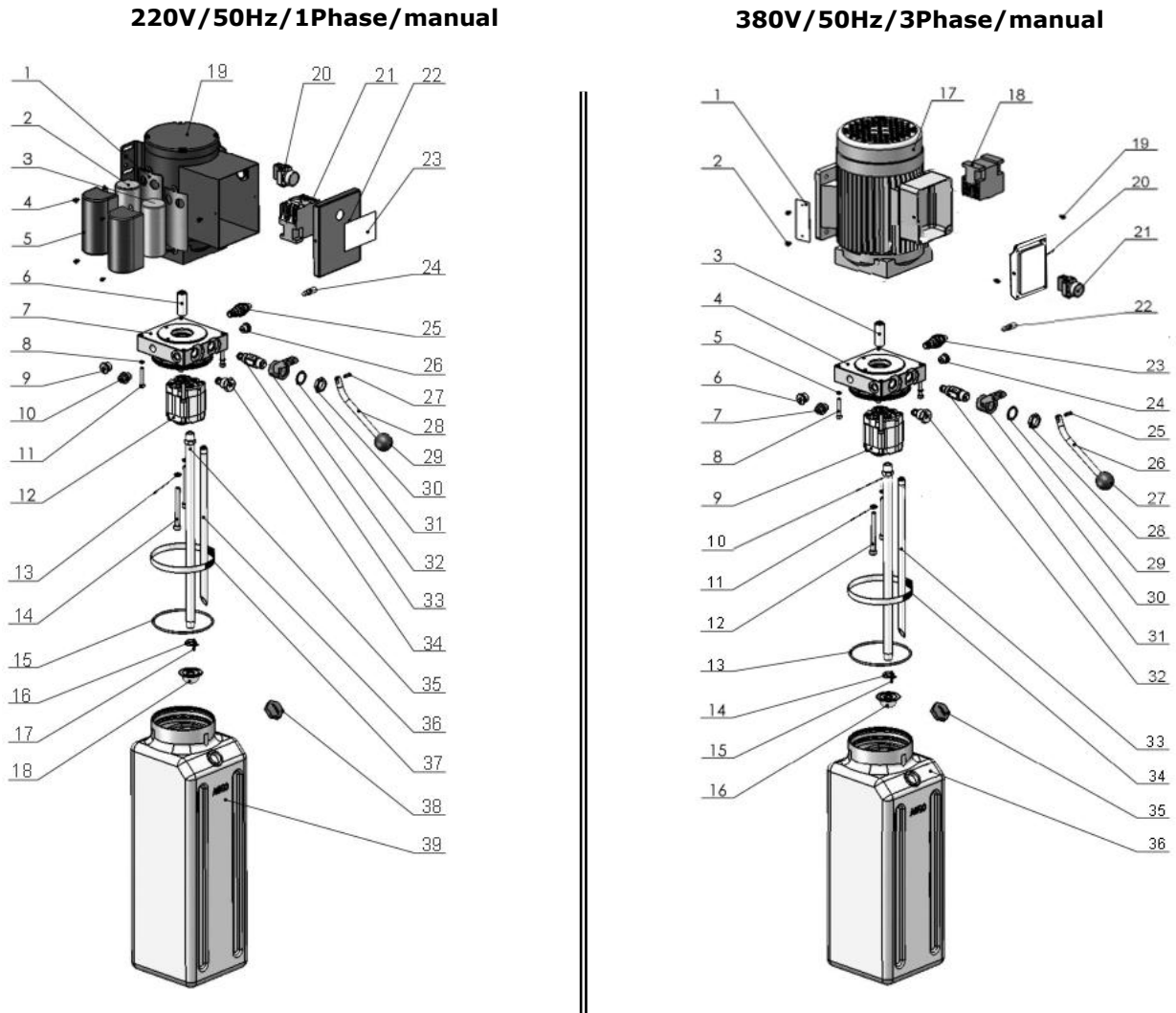


Fig. 33

Part list for 220V/50HZ/1phase

| Item | Part# | Description | Qty. |
|------|----------|------------------------|------|
| 1 | 81400180 | Rubber Pad | 2 |
| 2 | 81400250 | Start Capacitor | 1 |
| 3 | 81400200 | Running Capacitor | 1 |
| 4 | 10420148 | Cup head bolt | 6 |
| 5 | 81400066 | Capacitor Cover | 2 |
| 6 | 81400363 | Motor Connecting Shaft | 1 |
| 7 | 80101013 | Manifold Block | 1 |
| 8 | 10209149 | Spring Washer | 4 |
| 9 | 81400276 | Iron plug | 1 |
| 10 | 81400259 | Red Plastic plug | 1 |
| 11 | 85090142 | Socket Bolt | 4 |
| 12 | 81400280 | Gear Pump | 1 |
| 13 | 10209034 | Spring Washer | 2 |
| 14 | 81400295 | Socket Bolt | 2 |
| 15 | 81400365 | O Ring | 1 |
| 16 | 10209152 | Tie | 1 |

| | | | |
|----|----------|----------------------|---|
| 17 | 85090167 | Magnet | 1 |
| 18 | 81400290 | Filter | 1 |
| 19 | 81400413 | Motor | 1 |
| 20 | 10420070 | Push Button | 1 |
| 21 | 41030055 | Ac Contactor | 1 |
| 22 | 81400287 | Terminal cover | 1 |
| 23 | 71111170 | AMGO Name Plate | 1 |
| 24 | 81400560 | Throttle valve | 1 |
| 25 | 81400266 | Relief Valve | 1 |
| 26 | 81400284 | Plug | 1 |
| 27 | 10720118 | Pin | 1 |
| 28 | 81400451 | Release Valve Handle | 1 |
| 29 | 10209020 | Plastic Ball | 1 |
| 30 | 81400421 | Reelase Valve Nut | 1 |
| 31 | 81400422 | Self Locking Nut | 1 |
| 32 | 81400449 | Vavle Seat | 1 |
| 33 | 81400567 | Release Vavle | 1 |
| 34 | 81400566 | Check Valve | 1 |
| 35 | 81400288 | Oil suction hose | 1 |
| 36 | 81400289 | Oil return hose | 1 |
| 37 | 81400364 | clamp | 1 |
| 38 | 81400263 | Oil tank cover | 1 |
| 39 | 81400275 | Oil tank | 1 |

Part list for 380V/50HZ/3phase

| Item | Part# | Description | QTY |
|------|----------|------------------------|-----|
| 1 | 71150055 | AMGO Name plate | 1 |
| 2 | 81400300 | Cuphead Bolt | 2 |
| 3 | 81400363 | Motor Connecting Shaft | 1 |
| 4 | 81400362 | Manifold Block | 1 |
| 5 | 10209149 | Spring Washer | 4 |
| 6 | 81400276 | Iron Plug | 1 |
| 7 | 81400259 | Red Plastic Plug | 1 |
| 8 | 85090142 | Socket Bolt | 4 |
| 9 | 81400292 | Gear Pumpt | 1 |
| 10 | 81400288 | Oil suction hose | 1 |
| 11 | 10209034 | Spring Wahser | 2 |
| 12 | 81400295 | Socket Bolt | 2 |
| 13 | 81400365 | O Ring | 1 |
| 14 | 10209152 | Tie | 1 |
| 5 | 85090167 | Magnet | 1 |
| 16 | 81400290 | Filter | 1 |
| 17 | 81400439 | Motor | 1 |
| 18 | 81400348 | AC Contactor | 1 |
| 19 | 10420148 | Cup Head Bold | 2 |
| 20 | 80101022 | Terminal Box For Motor | 1 |
| 21 | 10420070 | Push Button | 1 |
| 22 | 81400560 | Throttle valve | 1 |

| | | | |
|----|----------|----------------------|---|
| 23 | 81400266 | Relief Valve | 1 |
| 24 | 81400284 | Plug | 1 |
| 25 | 81400452 | Pin | 1 |
| 26 | 81400451 | Release Valve Handle | 1 |
| 27 | 10209020 | Plastic Ball | 1 |
| 28 | 81400421 | Release Vavle Nut | 1 |
| 29 | 81400422 | Self Locked washser | 1 |
| 30 | 81400449 | Valve Seat | 1 |
| 31 | 81400567 | Release Vavle | 1 |
| 32 | 81400566 | Check Valve | 1 |
| 33 | 81400289 | Oil Rturn Hose | 1 |
| 34 | 81400364 | clamp | 1 |
| 35 | 81400263 | Oil tank cover | 1 |
| 36 | 81400275 | Oil tank | 1 |

Illustration of hydraulic valve for hydraulic power unit

