

IV. EXPLODED VIEW

MODEL: MC-600

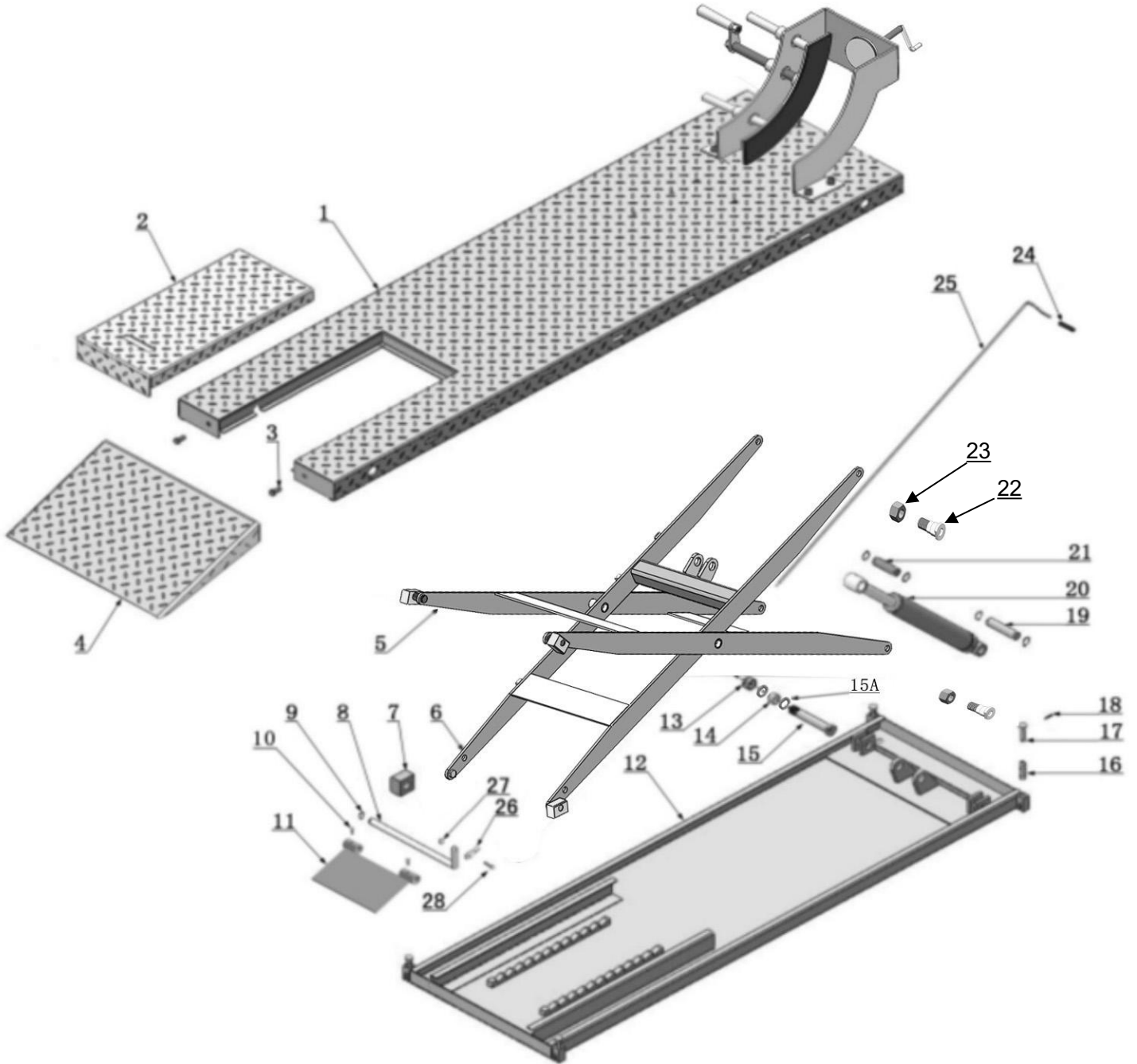


Fig.14

Parts list of Lift

Item	Part#	Description	QTY.	Note
1	11720118-01	Platform	1	
2	11720723	Cover plate of Platform	1	
3	10217069	Hex bolt	2	
4	11720123	Drive-in ramp	1	
5	11720120-01	Outer scissor	1	
6	11720119-01	Inner scissor	1	
7	1003105001	Slider 60*42*33	4	
8	11720122-01	Pin for safety device	1	
9	10206019	Clip ring ϕ 19	1	
10	10640050	Socket bolt M6*10	2	
11	11720026-01	Safety device	1	
12	11720027-02	Base	1	
13	1003085004	Nylok nut M18	2	
14	1002011001	Steel bush ϕ 22* ϕ 19*14	4	
15	11720007-01	Pin for Scissors ϕ 29*95	2	
15A	10510053	Washers ϕ 24* ϕ 19.5*1.8	6	
16	10720003	Spring ϕ 2*75	4	
17	11720012A-01	Pin for Spring	4	
18	10209025	Snap Pin ϕ 4*25	6	
19	11640006A	Cylinder Base Pin ϕ 25*112	1	
20	10640007	Cylinder ϕ 63*290	1	
21	11640057	Pin for Cylinder Connecting	1	
22	1103082011	Pins Assembly	12	
23	10650024	Nylok Nut M16	4	
24	10620136	Rubber tube	1	
25	11720111-01	Connecting pin for safety lock	1	
26	11720110	Connecting sleeve	1	
27	10420018	Nylok Nut M6	1	
28	10720102	Socket bolt M6*18	1	
29	10209021	Hex nut M10	4	
30	10209022	Washer ϕ 10	4	
31	10209039	Lock Washer ϕ 10	4	
32	10720002	Socket bolt M10*25	4	
33	1103083015	Wheel vise fixing seat	1	
34	1103083011	Support plate (Left)	1	
35	1103083022	Positioning adjustment screw rod	1	
35A	1103083019	Positioning plate	1	
35B	1003083002	Rubber pad 90*90*5	1	
35C	10630032	Clip ring ϕ 12	1	
36	10206023	Nylok Nut M12	3	

Item	Part#	Description	QTY.	Note
37	10206006	Washer φ12	6	
38	1103083010	Support plate (Right)	1	
39	1103083016	Wheel vise moving board	1	
40	1103083012	Adjusting Pin	1	
40A	1103083009	Guide Pillar	2	
40B	10209066	Hex Nut M16	2	
41	1103083007	Handle Connecting Board	1	
42	1103083017	Control Handle	1	
43	10410040	Socket Bolt M12*110	1	
44	10209064	Straight fitting 1/4NPT(M)*1/4JIC(M)	1	
45	10206156	Tool tray	1	
46	10720116	Control Cabinet	1	
47	10620071	Anchor bolt M10*100	4	
48	11720100	Tool tray bracket	1	
49	10720014	Securing belt (Optional)	1	
50	86010782	Wheel vise assy.	1	
51	10640050	Socket BoltM6*10	2	
52	81523035	Power unit	1	
Optional: Width extension kits (MC001)				
53	11720036-01	Connecting pin	2	
54	11720035-01	Width extension platform	2	
55	10209012	Snap pin φ3.2	4	
56	10217069	Hex bolt M12*30	4	
57	11720034	Width extension drive-in ramp	2	
Optional: Length Extension kits (MC002)				
58	10209126	Hex bolt M10*25	4	
59	10209039	Lock Washerφ10	4	
60	10209022	Washerφ10	4	
61	10209021	Hex nut M10	4	
62	11720126	Extension platform	1	

4.1 Control Cabinet (10720116)

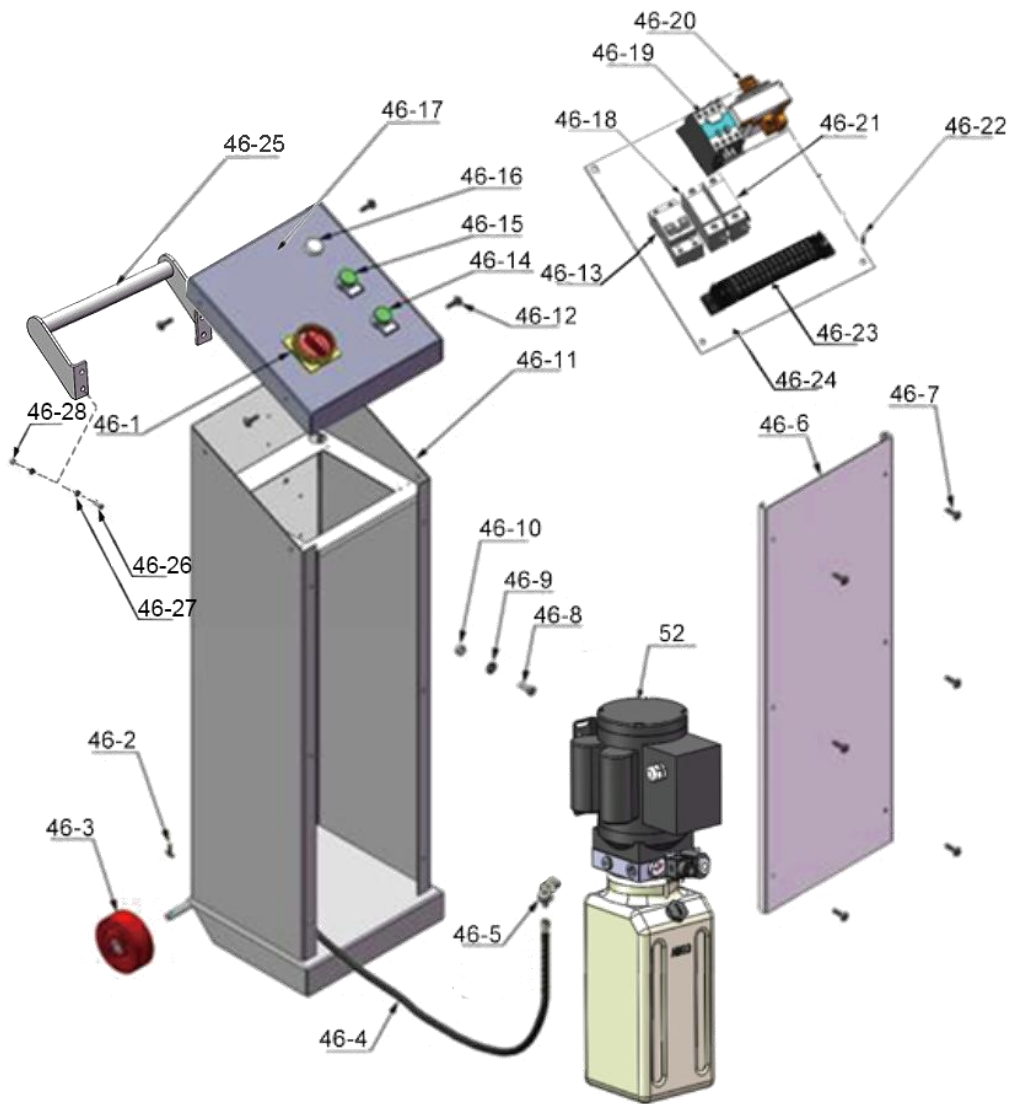


Fig.15

Parts for Control cabinet

Item	Part#	Description	QTY.	Note
46-1	41010217	Power Switch	1	
46-2	1061K104	Split Pin	2	
46-3	1003275021	White wheel	2	
46-4	10440042	Oil hose	1	
46-5	10209060	90° Fitting for power unit 3/8SAE0/R(M)*1/4JIC(M)	1	
46-6	11720082	Cabinet cover	1	
46-7	1003127001	socket bolt M6*30	6	
46-8	10209003	Hex bolt	4	
46-9	10209004	Rubber ring	8	
46-10	10209005	Self-locking nut	4	
46-11	11720053	Cabinet	1	
46-12	10209145A	Cup head bolt	4	
46-13	10202046	Breaker 2P	1	
46-14	10420070	Down button	1	
46-15	10420070	Up button	1	
46-16	10201094	Indicator (White)	1	
46-17	11720052	Control panel	1	
46-18	10202049	Breaker 1P	1	
46-19	10420084A	24V Contactor	1	
46-20	10420134	24V Transformer(TC)	1	
46-21	10202051	Breaker 1P	1	
46-22	1061K052	Cup head bolt	12	
46-23	10620082	Connecting terminal	1	
46-24	1052K006A	Panel for electric components	1	
46-25	11720696	Control panel	1	
46-26	10420153	Cup head bolt M6*20	4	
46-27	10420045	Washerφ10	8	
46-28	10420018	Nyloc Nut M6	4	

4.2 Cylinder (10640007)

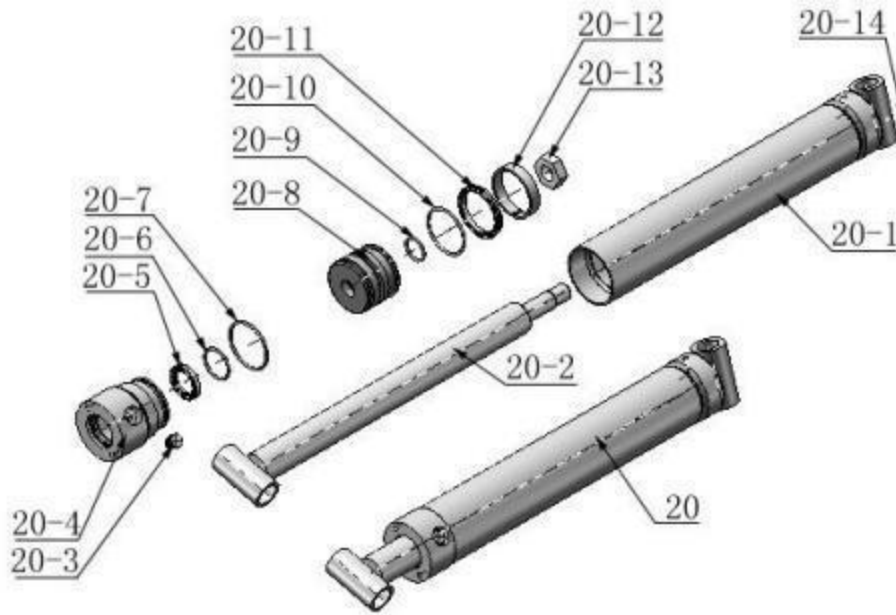


Fig.16

Parts for cylinder

Item	Part#	Description	QTY.	Note
20-1	11640030A	Bore Weldment	1	
20-2	11640031A	Piston Rod	1	
20-3	10201034	Bleeding Plug	1	
20-4	11201033	Head Cup	1	
20-5	10209078	Dust Ring	1	
20-6	10201032	O Ring	1	
20-7	10201035	O Ring	1	
20-8	11201028	Piston	1	
20-9	10206069	O Ring	1	
20-10	10201031	O Ring	1	
20-11	10201030	Y Ring	1	
20-12	10201029	Support Ring	1	
20-13	10206071	Nut	1	
20-14	10620064	Oil nozzle	2	